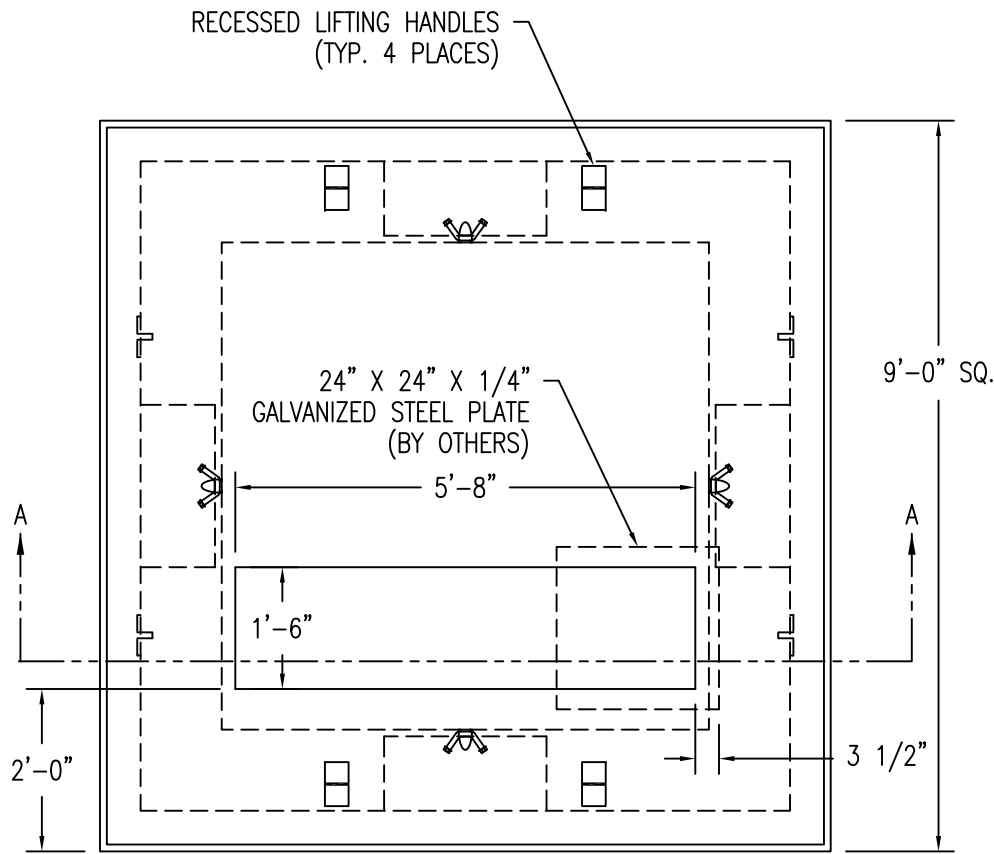


9' x 9' THREE PHASE TRANSFORMER PAD (750 - 2000 KVA)

ITEM #B-3

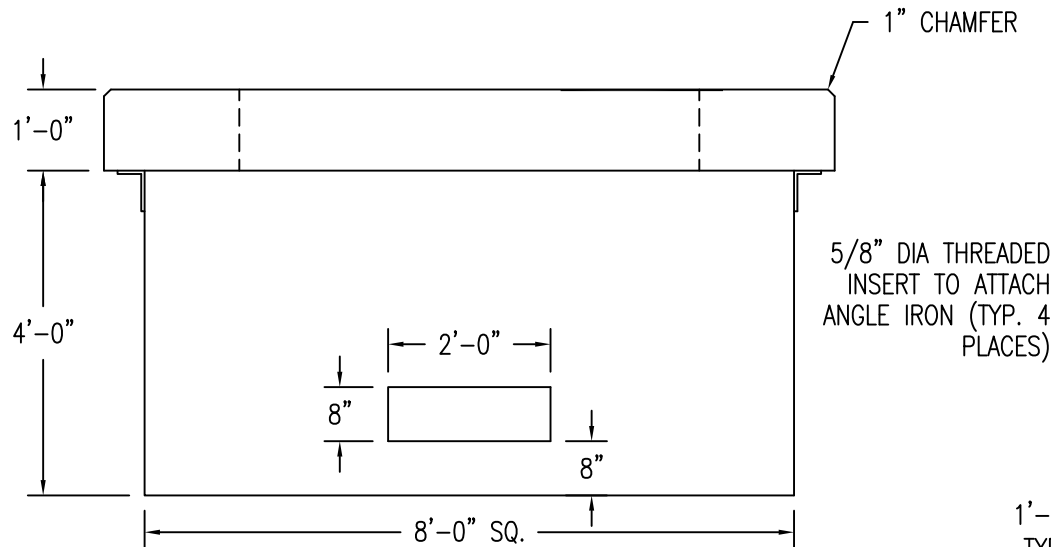
WEIGHT - TOP: 10,960 LBS BASE: 16,000 LBS



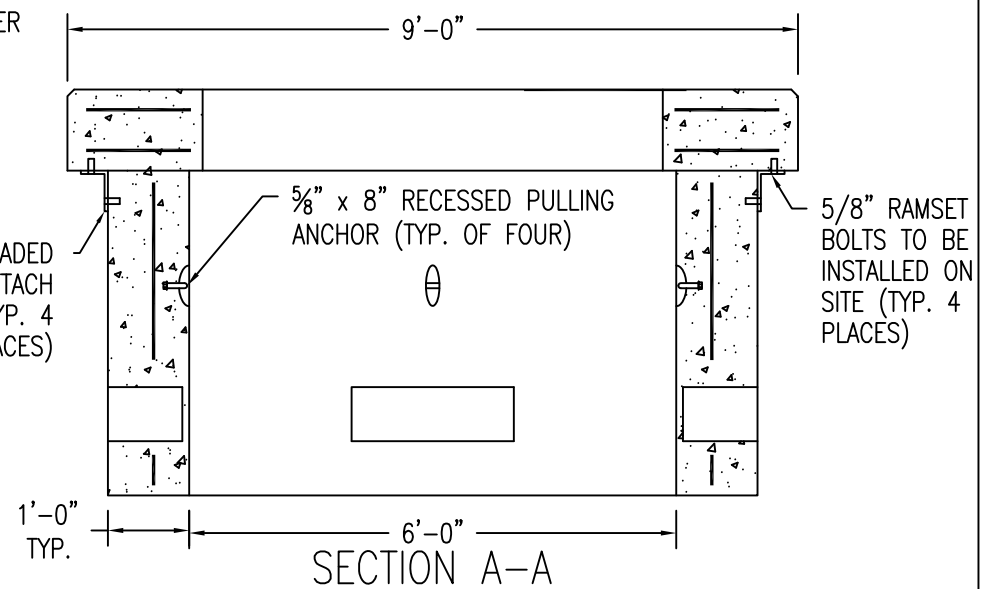
TOP VIEW

DESIGN NOTES:

- 1 - CONCRETE 4000 PSI AT 28 DAYS.
- 2 - REINFORCING PER CMP SPEC.
- 3 - DUCT OPENINGS SHOWN ARE TYPICAL AND CAN BE MODIFIED PER REQUEST.
- 4 - CENTRAL MAINE POWER COMPANY SPECIFICATION.



FRONT VIEW



SECTION A-A