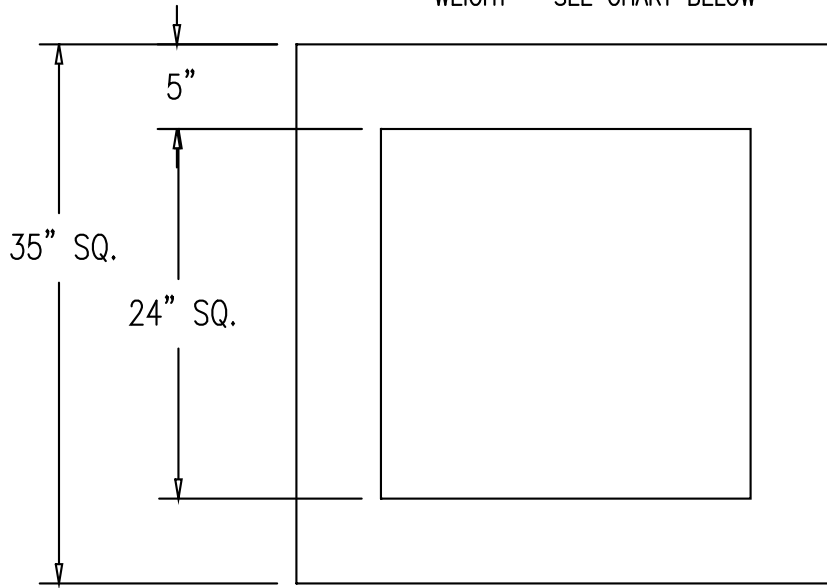
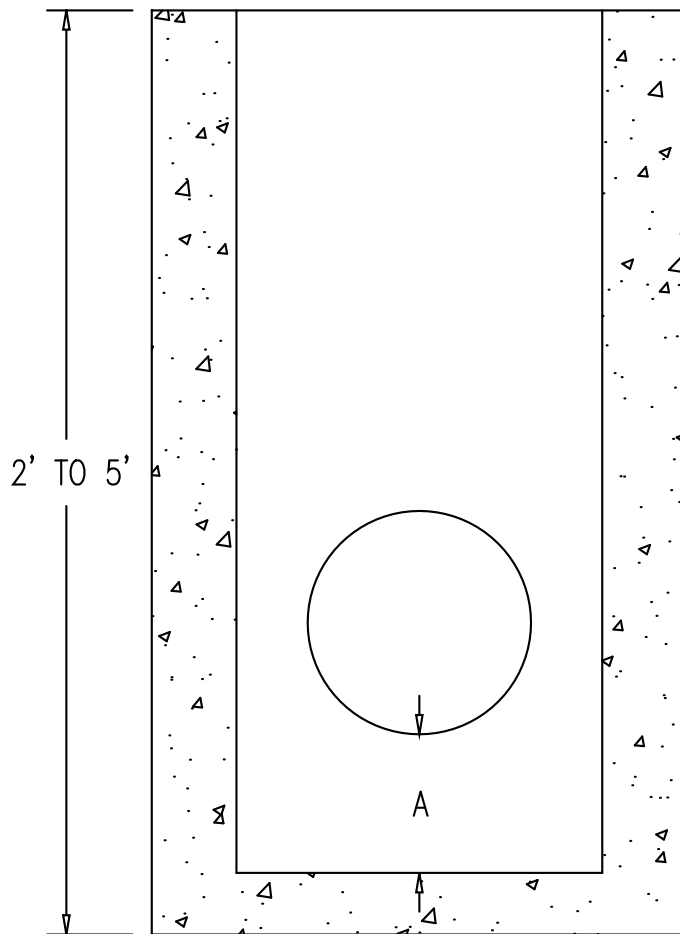


24" SQUARE CATCH BASIN (TYPE "F")

ITEM #C-1
WEIGHT - SEE CHART BELOW



PLAN



SECTION

DESIGN NOTES:

- 1 - FIBER REINFORCED CONCRETE 4000 PCI AT 28 DAYS
- 2 - (A) SIZE & LOCATION OF HOLE(S) AS NEEDED.
- 3 - FLEXIBLE WATERTIGHT PIPE BOOTS A.S.T.M. C-923.
- 4 - CATCH BASINS ARE AVAILABLE FROM 2'-0" TO 5'-0" HEIGHTS.
- 5 - 6", 1', & 2' RISERS AVAILABLE.

| BASE HEIGHT | WEIGHT (LBS) | RISER HEIGHT | WEIGHT (LBS) |
|-------------|--------------|--------------|--------------|
| 2' | 1,752 | 6" | 374 |
| 3' | 2,500 | 1' | 748 |
| 4' | 3,248 | 2' | 1,500 |
| 5' | 4,000 | | |
| 6' | 4,600 | | |